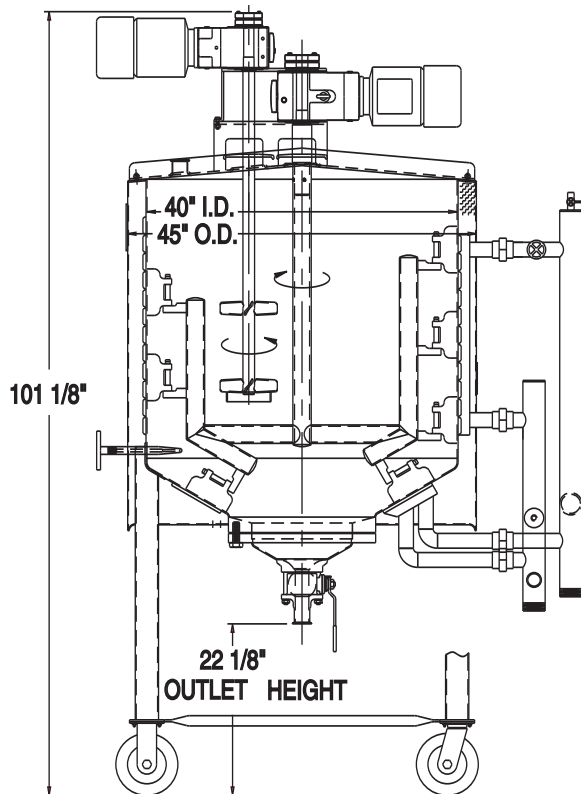




SPECIFICATIONS FOR RENTAL KETTLE



ELEVATION VIEW

DESCRIPTION

- 150 gallon PZ-K-B processor designed for atmospheric pressure at 300 degrees F. (non-code).

DIMENSIONS

- 40" ID X 45" OD 36" straight side.
- Overall tank height 96".

BOTTOM HEAD

- 8 ga. T-316L SS Formed cone head.

TOP HEAD

- 1/4" Formed bridge with 14 ga. hinged covers T-316L SS.

SHELL

- 10 ga. T-316L SS.

HEAT TRANSFER SURFACE

- (1) zone of heat exchange surface welded to shell sidewall ASME code stamped for 100 psig @ 300 degrees F. includes external stainless steel headers with zone control valve.

SUPPORTS

- (4) 3" T-304 SS tube legs with caster wheels and stainless steel fork lift tubes.

AGITATOR BRIDGE

- 10"x10" 3/8" plate T-304 SS.

AGITATOR

- (1) scraper type agitator with removable nylon scraper blades. Agitator has the ability to add sweep blades in place of scrapers. (1) offset turbine agitator.



SPECIFICATIONS FOR RENTAL KETTLE

AGITATOR MOTOR:

- (1) 3 hp 36 230/460v, 3 ph NORD helical bevel drive and (1) 3 hp 185 rpm 230/460 v 3 ph NORD helical bevel gear motor. LESSON NEMA 4 VFD's supplied and mounted for both agitators.

FINISH INSIDE

- #4 finish with weld polished 150 grit.

FINISH OUTSIDE

- #4 with welds polished 120 grit.

MIXER AGITATION

- Agitation consists of Walker standard DS impeller and seal with a 25 hp 440, v 3ph, BALDOR direct drive motor with INPRO/SEAL for added motor protection.

MANWAY

- 14 ga. hinged and removable cover.

FITTINGS

- (2) 1-1/2" clamp style ferrules in center bridge.

VENT

- None

OUTLET REMOVABLE

- (1) 2" manual ball valve with clamp style ferrule, 22-1/8" platform clearance.
- (1) 2-1/2" clamp style ferrule, 33" with Liqui-Mixer attachment.

INSULATION

- 2" thermal wool insulation.

OUTER WRAP

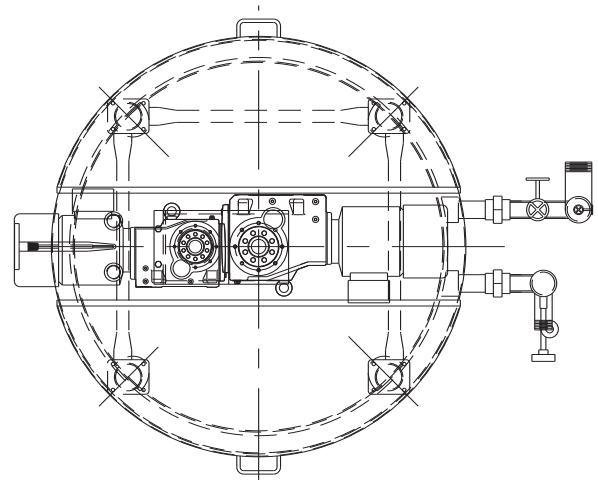
- 12 ga. T-304 SS with #4 finish side and bottom.

THERMOWELL

- (1) #1300 thermometer well with 5" dial thermometer.

LIFTING LUGS

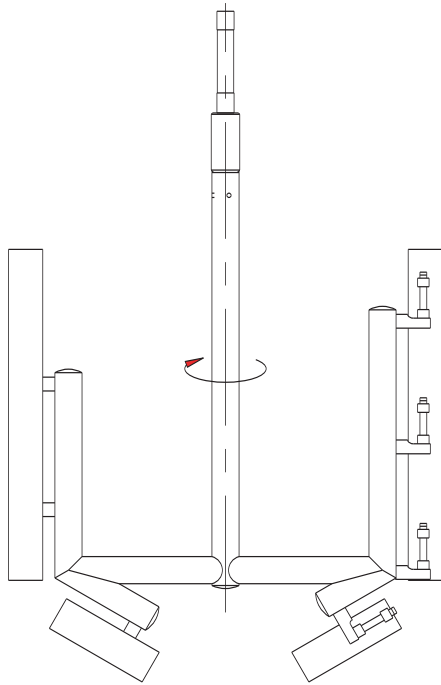
- None



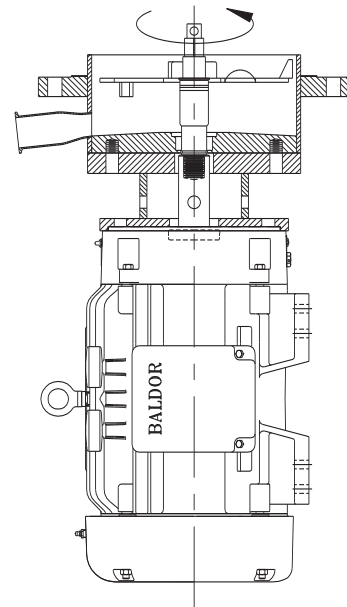
TOP VIEW



SPECIFICATIONS FOR RENTAL KETTLE



**OPTIONAL SWEEP BLADE
ATTACHMENTS**



**OPTIONAL LIQUI-MIXER
ATTACHMENT**