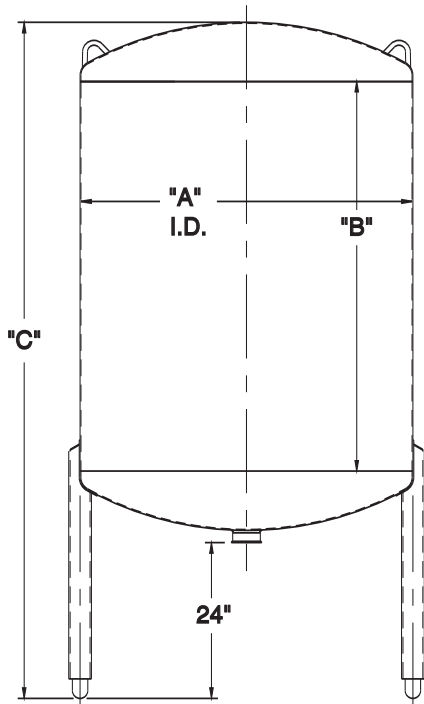




SPECIFICATIONS FOR SINGLE SHELL STORAGE TANKS



Capacity in gallons	"A"	"B"	"C"
200	38	42	81
300	44	48	89
500	50	60	104
800	57	72	117
1,000	64	72	119
2,000	78	96	148
3,000	86	120	175
5,000	102	144	204
7,500	114	168	232
10,000	120	204	270
12,000	128	216	284

Other capacities and specific geometries available upon request

TANK MATERIAL

STANDARD

- 304 stainless steel top domes, side wall and bottom
- Sanitary # 4 finish on all product contact surfaces
- # 4 industrial finish on exterior surfaces

OPTIONAL MATERIAL

- T316L stainless steel top dome, side wall and bottom
- Other materials available upon request

OPTIONAL FINISHES

- OD # 4 finish with welds stripe buffed
- OD 2B finish with welds stripe buffed
- Other finishes available upon request

VESSEL DESIGN

STANDARD

- Atmospheric vessel with dome top and bottom

OPTIONAL

- 30° cone
- 15° cone
- Reverse dished bottom
- Slanted bottom, supported by pitched pad

INSULATION

Optional

- 2" fiberglass sides and bottom with outer jacket 304 stainless steel with # 4 industrial finish

AGITATOR ASSEMBLY

OPTIONAL

- Stainless steel # 4 finish offset turbine agitator
- Tubular shaft, nylon bearings
- Opening – flared in top dome with rubber dust shield
- Agitator motor – single speed totally enclosed, fan cooled, gear motor, 230/460V/3/60 Hz
- Motor horsepower & RPM selected to suit specific application
- Other agitator assemblies available to suit a wide variety of applications consult Walker for details



SPECIFICATIONS FOR SINGLE SHELL STORAGE TANKS

HEAT TRANSFER SURFACE

OPTIONAL

- Preformed stainless steel pressure wall panels are welded to the outer surface of the liner and divided into separate zones
- One zone on bottom and remainder on side walls are designed for operating pressures up to 100 psig and are ASME code stamped
- All internal connections are stainless steel
- Heat transfer jacket and pressure drop requirements based on application, contact factory for options.
- CRN code stamp jacket

MANWAY

STANDARD

- Top mounted 18" diameter non-insulated stainless steel with "O" ring gasket in door
- Stainless steel hinge & latch

OPTIONAL

- Elliptical side entry manway

AIR VENT

STANDARD

- 3" vent tube with 4" vent screen

OPTIONAL

- Larger vent available based upon fill/empty rates

PRODUCT INLET

STANDARD

- 3" stainless steel sanitary ferrule in dome top

OPTIONAL

- 2" removable no-foam inlet assembly
- Other sizes available upon request

CIP

OPTIONAL

- 3" sanitary ferrule in dome for CIP assembly
- Removable double spray ball
- Other CIP devices available upon request

THERMOMETER FITTINGS

OPTIONAL

- Stainless steel projectile-type well (for indicating thermometer) through side wall
- Additional ferrules as required

PRODUCT OUTLET

STANDARD

- 3" stainless steel sanitary ferrule
- Other sizes available upon request

LEGS

STANDARD

- Stainless steel legs with adjustable ball feet & steel bracing # 4 finish

OPTIONAL

- Extended legs & bracing

LADDER

OPTIONAL

- Stainless steel exterior ladder with platform permanently mounted for convenient working height