



S P E C I F I C A T I O N S F O R T A N K H E A D S

TYPES

- Stainless Steel, Aluminum, Carbon and Alloy Heads
- Hydroformed Heads
- Spun Heads
- Heat Transfer Heads
- Custom Heads
- ASME Certified
- Pressed Heads
- Flat Flanged Heads
- Conical Heads
- Elliptical Heads

MATERIAL THICKNESS

- 18 gauge to 1/2" plate

POLISHING

- 2B mill finish
- OPTION
- #4 finish ID and/or OD
 - # 7 finish ID and/or OD

MACHINING (OPTIONAL)

- Edges machined square
- Edges beveled or tapered to your specification

TOOLING

- We have a series of dies to form a standard range of head dimensions and profiles. We are also able to fabricate dies for custom configurations. Please discuss your specific needs with your sales representative.

MATERIAL THICKNESSES AND SIZE CAPABILITIES

ASME & STANDARD FLANGED & DISHED HEADS

Diameter 9" to 162"
Thicknesses 14 ga to 1/2"

FLANGED ONLY

Diameters 14" to 180"
Thicknesses 14 ga to 1/2"

ELLIPITICAL FLANGED AND DISHED HEADS

A variety of sizes available
Thicknesses 12 ga to 8 ga
0.190" to 0.250" for aluminum

DISHED ONLY HEADS

Diameters 10" to 162"
Thicknesses 18 ga to 1/2"

FLANGED & REVERSE DISHED HEADS

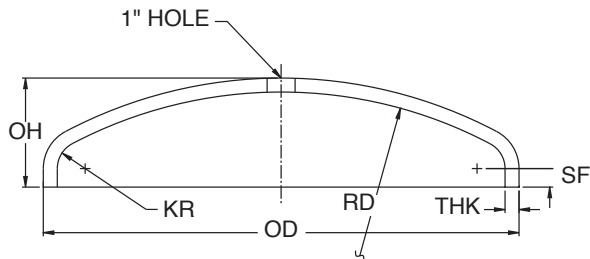
Diameters 24" to 152"
Thicknesses 14 ga to 1/4"

CONICAL HEADS

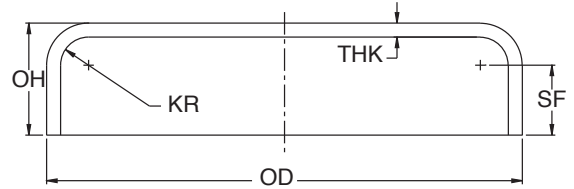
Diameters 9" to 144"
Thicknesses 14 ga to 3/8"

DISHED & FLARED HEADS

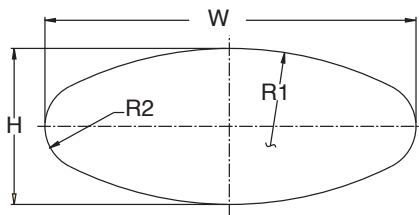
Diameters 24" ID to 162" OD
Thicknesses 14 ga to 1/2"



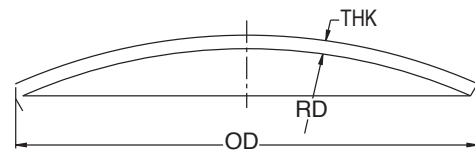
STANDARD FLANGED & DISHED HEAD



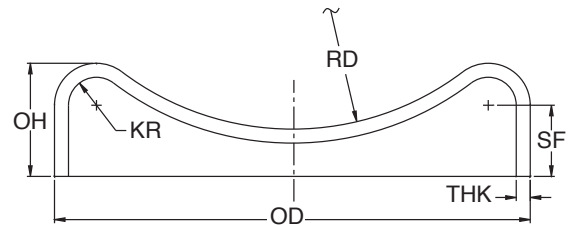
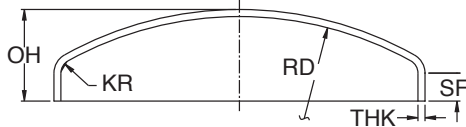
FLANGED ONLY HEAD



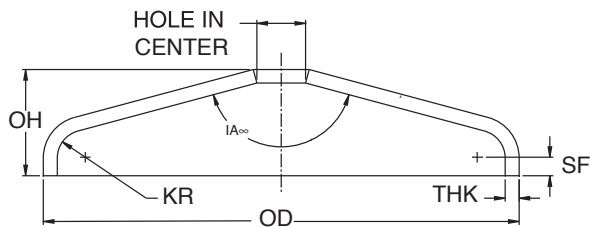
ELLIPTICAL FLANGED & DISHED HEAD



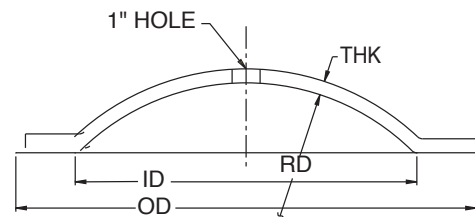
DISHED HEAD ONLY



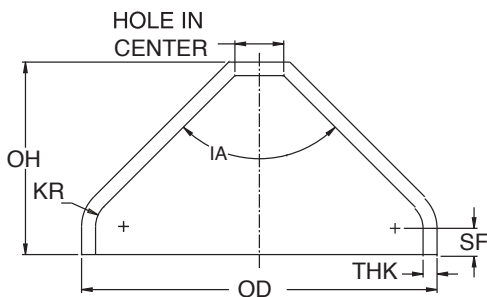
FLANGED & REVERSE DISHED HEAD



FLANGED CONICAL HEAD



DISHED & FLARED HEAD



FLANGED CONICAL HEAD

- KEY
 OD = OUTSIDE DIAMETER
 THK = THICKNESS
 OH = OVERALL HEIGHT
 SF = STRAIGHT FLANGE
 KR = KNUCKLE RADIUS
 RD = RADIUS OF DISH
 R1 = RADIUS
 R2 = RADIUS
 W = WIDTH
 H = HEIGHT
 IA = INCLUDED ANGLE